



# Year 9 Science

End of Unit  
25 marks  
45 mins  
Date

## Multi-cellular Organisms

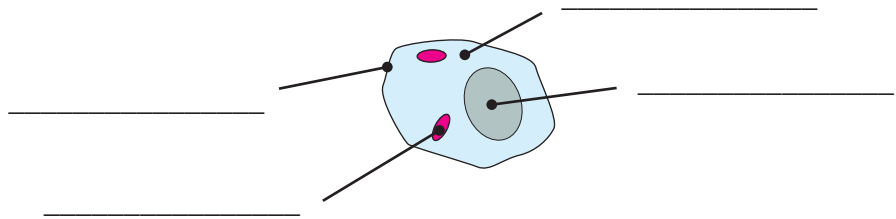
Instructions: 1. Answer all questions on this paper.

Name \_\_\_\_\_

Class \_\_\_\_\_

- 1 Label the typical animal cell with the following organelles: (2)

cell membrane  
nucleus  
mitochondria  
cytoplasm



- 2 Why would you expect more mitochondria in a muscle cell than in a pancreas cell? (1)

\_\_\_\_\_  
\_\_\_\_\_

- 3 List four vital nutrients needed by the cells of our body. (2)

1 \_\_\_\_\_ 2 \_\_\_\_\_  
3 \_\_\_\_\_ 4 \_\_\_\_\_

- 4 List four waste products that need to be excreted from the cells of our body. (2)

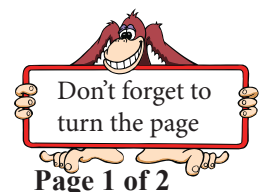
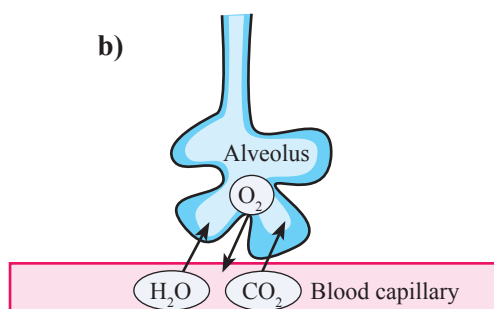
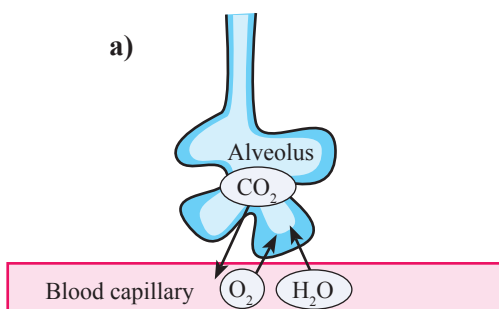
1 \_\_\_\_\_ 2 \_\_\_\_\_  
3 \_\_\_\_\_ 4 \_\_\_\_\_

- 5 What is the main function of the respiratory system? (1)

\_\_\_\_\_  
\_\_\_\_\_

- 6 Which of the following best describes the flow of gases between the lungs and the blood? (1)

Explain: \_\_\_\_\_



7 Give a brief description of the function of each of the following body systems: (4)

- a) Digestive system \_\_\_\_\_  
\_\_\_\_\_
- b) Circulatory system \_\_\_\_\_  
\_\_\_\_\_
- c) Urinary system \_\_\_\_\_  
\_\_\_\_\_
- d) Immune system \_\_\_\_\_  
\_\_\_\_\_

8 Choose a body system and describe the functions of the system's organs. A sketch may be useful. (5)

\_\_\_\_\_

\_\_\_\_\_

\_\_\_\_\_

\_\_\_\_\_

\_\_\_\_\_

\_\_\_\_\_

\_\_\_\_\_

\_\_\_\_\_

9 The diagram shows a simplified view of the circulatory system. (7 ½ each)

a) Given that an artery carries blood from the heart, and a vein carries blood to the heart, indicate whether each of A, B, C, or D are arteries or veins.

A \_\_\_\_\_ B \_\_\_\_\_ C \_\_\_\_\_ D \_\_\_\_\_

b) The term pulmonary refers to the lungs.

Which is the pulmonary artery? \_\_\_\_\_

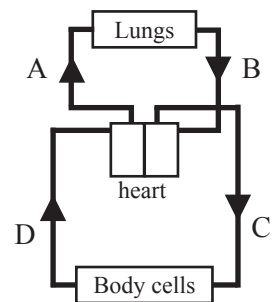
Which is the pulmonary vein? \_\_\_\_\_

c) Indicate whether each of A, B, C, or D are rich in oxygen or poor in oxygen.

A \_\_\_\_\_ B \_\_\_\_\_ C \_\_\_\_\_ D \_\_\_\_\_

d) Indicate whether each of A, B, C, or D are rich in carbon dioxide or poor in carbon dioxide.

A \_\_\_\_\_ B \_\_\_\_\_ C \_\_\_\_\_ D \_\_\_\_\_



Did you find your silly mistakes?

